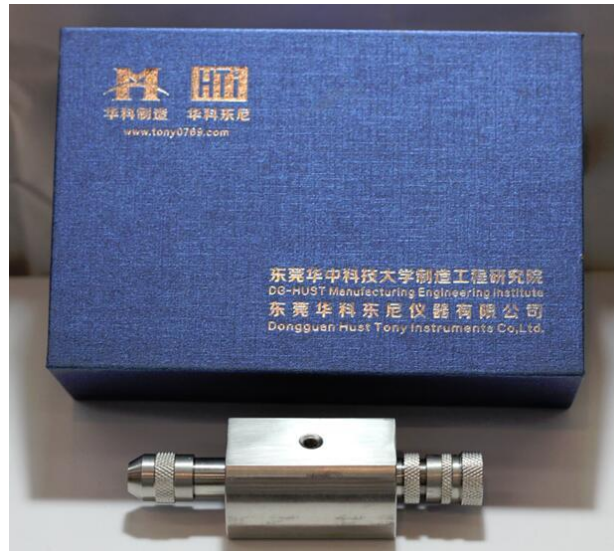


Product Information

TW-221 Sharp Point Tester

Detect items :Sharp Point Tester is designed to test out the hidden hazardous of sharp points, to get rid of the risk of injury from the products like toys for children.

Standard: 16 CFR 1500.48, ASTM F963 4.9, EN-71 2014 8.12, ISO 8124-1 5.9 sharp point test



Specification:

weight: 1 pound

Material: stainless steel

Power source: 23A/12V, built-in battery

Dimensions: 112x 16x16mm

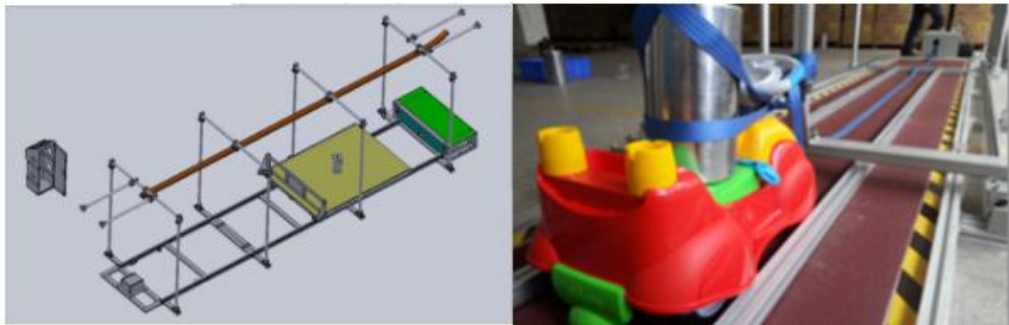
Accessories: weight ,batteries 2 pcs ,bulb 2 pcs, operation manual

Product Information

TW-257 Dynamic Strength equipment - 2m / s Tester

Detect items :test the dynamic strength performance of toy scooter by such movement that drive the toy three times at a steady speed of $2.0 \pm 0.2\text{m/s}$ perpendicularly into a non-resilient step with a height of $(50 \pm 2)\text{mm}$.

Standard: ISO 8124-1 5.27 Dynamic strength for toy scooters; EN71-1 2011 8.22.3 section/ASTM F963 8.20



Specification:

Test Sample : Children Ride-on-Toys

Sample No : 1 pcs per time

Test Speed : $2 \pm 0.2\text{m/s}$

Load weight : 25Kg/50Kg

Barrier : 50mmx50mm

Passage width : 90cm

Size(WxDxH) Machine : 153x450x156cm

Control box:36x32x100cm

Weight : $\approx 650\text{Kg}$

Power : 1 ϕ AC 380V 50Hz

Total weight after package: 700KG, Total Volume: 2.5CBM

Product Information

TW-229 Mouth Actuated Toys Durability Tester

Detect items :To prevent mouth moving toys or children's mouthpiece has been mistakenly inhaled and cause a choking hazard.

Standard:

EN71-1 8.17.2 Other mouth-actuated toys(not suitable for 8.17.1),

ISO 8124-1 4.25,5.20,

ASTM F963 8.13 Durability Test for Mouth-Actuated Toys



Specification:

1. Instruments to meet at least 295 cubic centimeters within + / -10 cubic centimeters of gas in 5s, and can be 10 times alternately blowing, suction.
2. Instrument install high precision pressure gauge (digital pressure gauge is optional if client need)
3. Supply gas-type fitting for different toys
4. Gas flow could be controlled by gas valve
5. Power: 220V/50Hz, 4A.
6. Dimension (L*W*H): 650*400*260mm
7. Weight: 40 kg

Product Information

HTP-005 Button Strength Pull Test Instrument

Detect items :

Button Pull Test Machine is used to determine the holding or breaking strength of prong-ring attached snap fasteners onto garments. Consists of an Upper Snap Clamp, a Lower Fabric Clamp & Force Gauge mounted on a Stand.

Standard: 16 CFR 1500.51-53 ; ASTM WK4510 PS79-96 ; ASTM F963 ; EN71-Part1; M&S P115A(for snap) P115(for button).



Specification:

Model : http-005

Button pull tester : snap button pull test machine

2 model : automatic and manual

Force : 50kg

Dimension : 260 x 310 x 820mm (L x W x H)

Weight : 32kg

Accessories :

IMADA Force Gauge FB-30K*1

Upper Universal Grip*1

Upper Stud Grip*1

Lower Fabric Clamp & Level Arm Locking*1

Lower Grasp Button Accessory Kit*1

Calibration Weight 15LB*1

Three Pronged Grip*1

Upper Long Nose Vise Grip*1

The snap component is gripped by the Upper Snap Clamp and the garment is fixed to the lower Fabric Clamp.

By turning the Top Flywheel, the operator can apply a specific force and the holding force or the breaking strength can be recorded.

Button Pull Test Machine used for measuring the responsibility of garment manufacturer to ensure button and firmware can be fixed on the ready-made garments properly, Avoiding button drop from garment to brought danger to baby swallow. Used for testing the vertical orientation tension of button and added touch.

Product Information

TW-219 Kinetic Energy Toys Testing Equipment

Detect items :

speed-detecting catapult kinetic energy tester, it can test catapults, accumulated catapult toys, non-accumulative catapult toys, such as toy guns, toy cars , strollers, balls, crickets and so on .

Standard: EN 71-1 2011 8.24 / 16 CFR 1500 / ASTM F963 4.8 / ISO 8124-1 4.18:5.15



Specification:

Our toys kinetic energy tester uses a standard RS232 Remington micro-printer to record the test results 5 times.

Power support: AC 220V/5W

Maximum timing: 15.000000S

Timing range: 0.000001-15.000000S

Speed display range: 0.007M/S-10000.000M/S.

Channel input: inside/outside channel, (external channel is optional)



external channel

Features:

The new model- TW-219A toys kinetic energy only need to enter the weight of sample, it can automatically convert the energy value, then print out the value. Instead of the the old model -calculated manually method.

Standard accessories :

Kinetic energy tester * 1 pcs,

external sensor * 1 pcs,

external sensor bracket * 1 pcs,

power cable * 1pcs,

operating instructions * 1 pcs

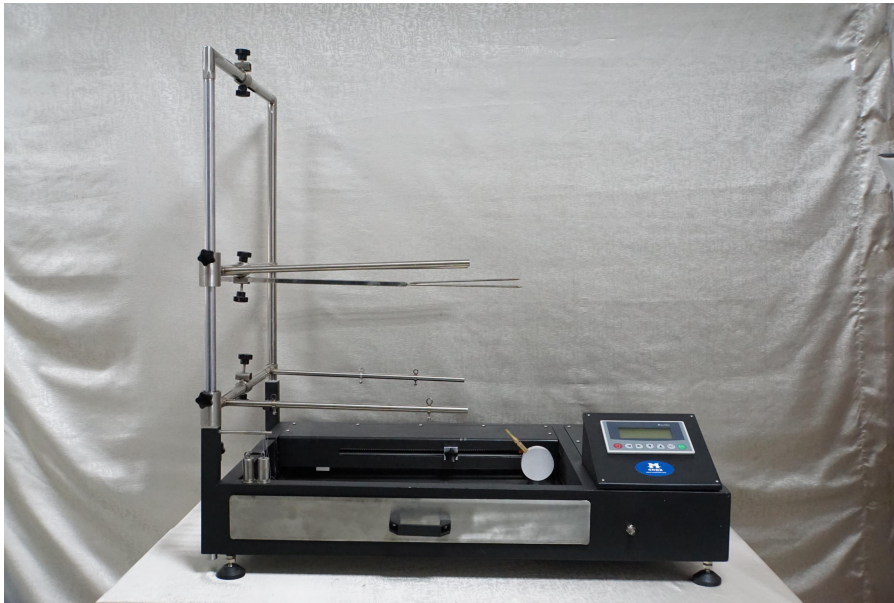
Product Information

TW-226 Toys, Children Clothing Flammability Tester

Detect items :

Testing the flammability of toys, children clothes and accessories, evaluate toys flammability speed and time.

Standard: EN71-1-2014+A1-2018 , 16 CFR 1500.49, ASTM F963 4.8, GB 6675-2003 A.5.9

**Specification:**

- 1, Ignition time set range: 0~99.99S Precision: 0.01S
- 2, continue burning time range : 0-999.9S precision 0.1S
- 3, Please put this flammability into a cabinet to make test.
- 4, Ignition mouth size: applies to ISO 6941 standard.
- 5, Dimension of specimen: 150mmX560mm
- 6, Power: AC200V 50Hz
7. Weight: 40KG
8. Gas: butane gas.
9. Mercerized Marker Thread: white cotton thread, density > 50

Gas and Flame Lighter (but could not be sent as the forbidden goods)

Gas and Flame Lighter (but could not be sent as the forbidden goods)

Product Information

TW-225 Toys Fabric Surface's Flammability Tester

Detect items :

Testing the flammability of toys performance of fluff or fur fabrics

Standard: BS 4569, EN71



Specification:

fixture length	400mm
burner move speed	150±5mm/s
burner stroke	≥300mm
fabric plush altitude	70mm
Space between two fixtures	100mm
sample dimension	length 200mm,width≥130mm
sample amount for test	2 pcs
space between burner and sample surface	5mm
space beteen burner center to lower fixture	15mm
burning gases	butane gas
Size(WxDxH)	60x41x32cm
weight(Kg)	≈20Kg
power	1 ¢ AC 220V 5A

Product Information

TW-227 45 degree Flammability Tester

Detect items :

45 Degree Flammability Tester , is to determine the fabric flammability (fabric burning test) under controlled conditions

Standard: ASTM D1230 , FTMS 191-5908 , CRF 16-1610 , CALIF TB 117 NFPA 702 , ISO 8124-2

**Specification:**

Manual firing device	including sample holder and brushing device
Spread time scope	0-99.99s
Firing time	1s or specified
Resolution	0.01s
Igniter model	comply to ASTMD1230
Machine Size	L 40cm*W 23cm* H55cm
Weight	15KG
Power Supply	220V

Product Information

TW-220 Sharp Edge Tester

Detect items :

The Sharp Edge Tester is used to touch to examining a toy of position whether the existence endanger safe sharp-edged edge, belong to the test item of the toy safety

Standard:

ISO 8124-1 4.6,5.8 Sharp-edge test;
EN71-1 2011 8.11 Sharpness of edges;
ASTM F963 4.7

**Specification:****Accessories:**

Charging unit *1 pcs;

Foot switch *1 pcs;

Base plate *1 pcs;

Standard import sharp edge tape *1 roll PTFE

Dimensions: 260*120*180mm(L*W*H)

Weight: 1.99 kg

Product Information

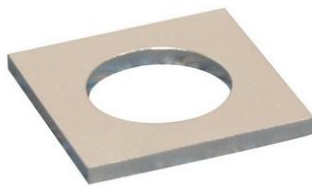
TW-205 Test Fixture for Small Balls

Detect items :

Small ball test fixture is use to examine a toy up of whether small ball accessories may result in the child swallow, stop breath way and esophagus to cause choking danger or not.

Standard:

EN71-1 2014 8.32.1 +A1-2018 / CFR 1500.19 / ASTM F 963 4.34 / ISO 8124-1 5.4/
GB6675-2003 A.5.3

**Specification:**

Test Fixture for Small Ball 1 pcs

Manual 1 brochure

Material : Aluminum Alloy

Product Information

TW-206 Small Parts Cylinder

Detect items :

To determine whether toys & other articles intended for use by children under 3 years old present choking, aspiration, or ingestion hazards because of small parts.

Standard:

EN71-1:2014 8.2 , 16 CFR 1500.48, ASTM F963 4.8, ISO 8124 5.2 small parts test

**Specification:**

Dimensions: 70*38*38mm

Weight: 430g

Material : stainless steel

Product Information

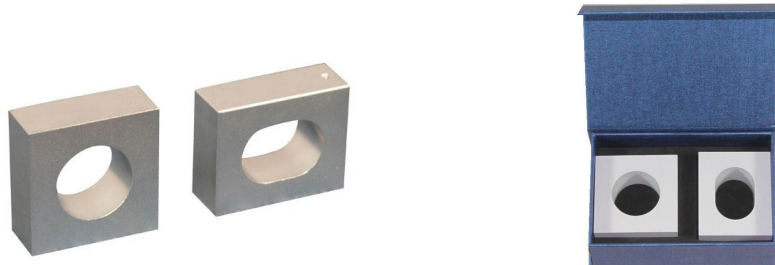
TW-203 Rattle Test Fixture – Geometry Template A/B

Detect items :

Oval / round bell tester (sound toy test template) is a simulation of children's oral capacity to detect parts on the toys or toys may cause choking or swallowing, and dangerous.

Standard:

EN71-1-2014+A1-2018 Geometric shape of certain toys ; ISO8124-1 4.5/5.3;16 CFR 1510; ASTM F 963 4.21; GB6675-2003 A.5.3



Model	Oval (Template A)	Round (Template B)
Inside hole radius/ Inner Diameter(mm)	17.5+0/-0.05	42.7+0/-0.1
Width(mm)	65±2	73±2
Inside Hole Width(mm)	35mm	/
Inside Hole length(mm)	50+0/-0.1	/
Length(mm)	80±2	73±2
Thickness(mm)	30+0.1/-0	30+0.1/-0
Material	Aluminum metal alloy, surface oxidation	
Standards	EN-71-1 section 8.16 ASTM F963 section 4.22.1, 4.23, 4.24 16CFR 1510 ISO 8124-1section 5.3 GB6675-2 section 5.3	EN-71-1 section 8.16 and 8.33 ASTM F963 section 4.22.2, 4.24.2, 4.32 16CFR 1510 ISO 8124-1section 5.3, 5.6 GB6675-2 section 5.3, 5.6
Weight	300g	300g

Product Information

TW-204 Accessibility Probes AB

Detect items :

To determine whether any part or component of a toy can be contacted by the probe. The probe simulates the finger of the infant or child touching the accessible points or edges of a toy, which may then be subject to tests of sharp points or sharp edges.

Standard:

EN71-1-2014+A1-2018 , ASTM F963 3.1.2 , ISO8124--1: 5.7 accessibility of a part or component, 16 CFR 1500.48 and 16 CFR 1500.49

**Specification:**

Accessibility probes are designed for two age groups:

Probe A for 0-36 months

Probe B for 37-96 months

Net weight:330g

Made of Aluminum Alloy

Product Information

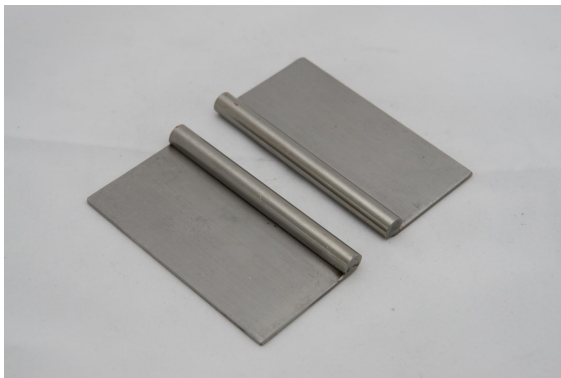
TW-247B Toys Test Fixture Metal Wire Tester

Detect items :

Used to test the toys from the increase in rigidity or fixed shape of the metal wire or other metal materials used in the bending (or abuse) the process, whether due to fracture a risk of a sharp tip or sharp edges protruding. Abuse testing program is a toy.

Standard:

EN71-1 2014 8.13 fixture test



Made of stainless steel material.

Product Information

TW-211 Liquid Leak Test Needle

Detect items :

Used to test the toys from the increase in rigidity or fixed shape of the metal wire or other metal materials used in the bending (or abuse) the process, whether due to fracture a risk of a sharp tip or sharp edges protruding. Abuse testing program is a toy.

Standard:

EN71-1 8.15 Leakage of liquid-filled toys ; NM300-1, ISO 8124-1 5.19 , GB6675 A.5.19

**Specification:**

Diameter 1MM, the top radius 0.5MM, load 5N, for leakage testing,

Dimension Tolerance: + /-0.05mm

The thread needs the 0-100N push-pull meter

Product Information

TW-200B EN71 Impact Test Plate

Detect items :

Simulate the real floor, to test the toys fall on the floor of the toys produced after the destruction and damage caused by the impact of whether the product meets the requirements dropped.

Standard:

EN71-1 2014 8.5 drop test

**Specification:**

2mm Rubber+4mm, SST Sheet 600mm×600mm

Hardness: Shore 75±5

Product Information

TW-200A ASTM F963 Impact Media

Detect items :

ASTM Impact Media simulates the real floor, to test the toys fall on the floor of the toys produced after the destruction and damage caused by the impact of whether the product meet the requirements dropped

Standard:

ASTM F963 8.7.1

**Specification:**

Specification: 1/8" × 12" × 12" 9 pcs/set

weight: 6kg

ASTM Impact Media 1 set

Operating manual 1 brochure

Product Information

TW-228 Toy Box Cover Durability Tester-Toy Chest Tester

Detect items :

The machine applies to test the durability of toys lid switch that can be repeated. Through toys lid movements by the driven force of a rotating pendulum, to simulated hinged part of the toy lid is intact or not after a certain number of repeated opening and closing movements.

Standard:

16 CFR 1500, ASTM F963 4.8, EN71-1 2014 8.31.3 , ISO 8124 -1 5.13



Specification:

Control mode: Controlled by Micro-computer automatically

Action mode: Electrocutation or Automatism

Test pieces: Stop automatically

Sample for test: One pcs for each test

Test speed: 15 second for opening and closing movement each cycle.

Pendulum rod moving angle: 0°~80°

Test times: 7000 times

Counter: LED display; 0~9999 times

Max height: 700mm

Gas source: 6kgf/cm²

Dimension (WxDxH): 97.5x35x126cm

Weight: 30kg

Power: 1 ϕ AC 220V 3A

Product Information

TW-201 Free Fall Drop Test Equipment, Drop Impact Test Machine

Detect items : To simulate the mechanical damage through an impact action likely to be performed by a child. Assessment of sharp edges, sharp points and small parts may be carried out after impact.

Standard:

EN71-1-2014+A1-2018

ISO 8124-1 : 2018

ASTM F963-2017



specifications

1. Dimension: 300(l)x300(w)x16(h)mm
2. Adjust height: 0-200mm
3. impact hammer diameter: 80.00mm
4. Impact hammer weight: 1Kg
5. With metric / Imperial unit height dicate ruler

Weight:12kg

Product Information

TL-243 Tohnichi Torque Gauge BTG60CN-S Universal Testing

Detect items : Torque Gauge are handheld torsion meter and they are ideal tools for torsion testing and little torsion measuring. The instrument is configured Two-way calibration, so two-way test is possible.

Standard:

ISO8124-1 section 5.24.5

GB 6675-2 section 5.24.5

EN71-1 section 8.3

ASTM F963 section 8.8, 8.16, 8.24.4.3

16CFR 1500 section 51, 52, 53

EN 16890-2017 Section 8.3.1



specifications

Capacity: 6-60 cN.m (0.06Nm ~0.6Nm)

Gradation: 1.00 cN.m(0.01N.m)

Material : Made of stainless steel

Product Information

TW-229D Mouth-actuated Toy Durability Tester With touch screen

Detect items : Mouth-actuated Toy Durability Tester is suitable for the test of the safety of the Mouth-Actuated Toys, such as whistles with a ball, the sounders with a reed and other toys.

Standard :

EN-71-1 section 8.17.2;

ISO 8124-1 section 5.20

ASTM F963 section 8.13;

GB 6675.2 section 5.20



specifications

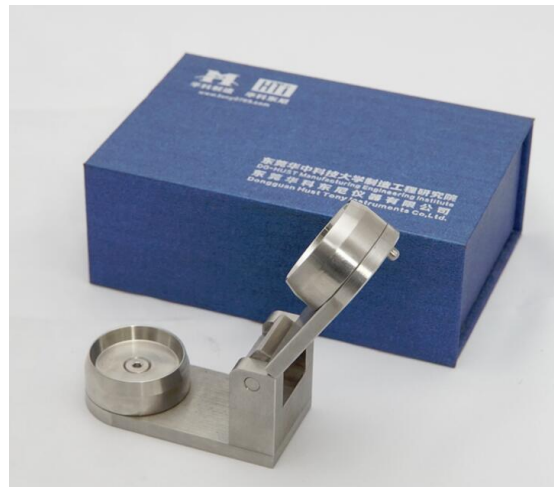
1. Instruments to meet at least 295 cubic centimeters within + / -10 cubic centimeters of gas in 5s, and can be 10 times alternately blowing, suction.
2. apply a pressure of 13,8 kPa \pm 5 % in the direction of the mouthpiece for 5 s.
3. Instrument install high precision pressure gauge (digital pressure gauge is optional if client need)
4. Supply gas-type fitting for different toys
5. Gas flow could be controlled by gas valve
6. Power: 220V/50Hz, 4A.
7. Dimension (L*W*H): 650*400*260mm
8. Weight: 20 kg

Product Information

TW-207 Safety Toys Bite Tester

Detect items : Simulates a child biting the accessible area of toys. The part of the toy being tested is placed in a bite test clamp & a specified force is applied for a specified period. The toy is then tested to ascertain whether or not any hazards result from the bite test such as sharp points/ sharp edges / small parts.

Standard:ASTM F963, 16CFR 1500.52C



specifications

Dimensions: 95*45*45mm

Weight: 760g

Bite Test Standard Accesssoories: Bite Tester 1 PCS

Manual: 1 brochure

Product Information

FB-200N IMADA Mechanical Force Gauges

Detect items : Mechanical force gauge is an analog-type force gauge with spring mechanism, which is also known as "Push Pull Gauge". Mechanical force gauge is easy-handling since it is durable and needs no battery. Besides, you can stably apply force and easily read force transition by seeing the movement of pointer.

Standard: EN71-1-2014+A1-2018



specifications

Model: FB-200N

Brand: Imada (Japan)

No batteries needed.

Intrinsically safe in hazardous environments.

Capacity up to 200N (push and pull).

FB Ranges (Resolution) Accuracy: 0.3% F.S.

Real time and peak mode.

Full set of accessories and carrying case included

Product Information

Detect items :

.

Standard:

Product Information

Detect items :

.

Standard:

Product Information

Detect items :

.

Standard:

Product Information

Detect items :

.

Standard:

Product Information

Detect items :

.

Standard: