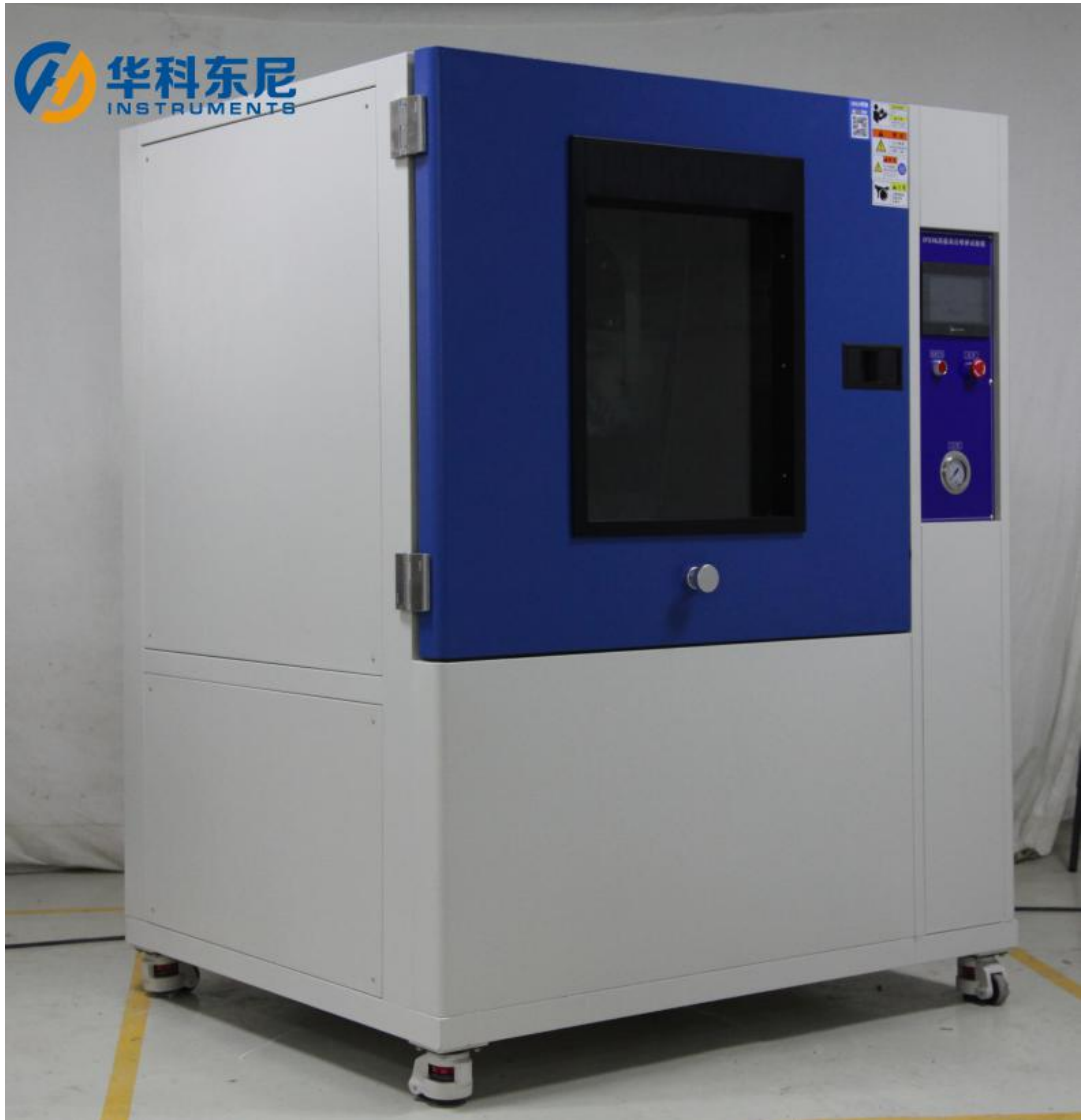


Product Information

WT 12 -IPX9/9K High Temperature And High Pressure Water Spray Test Chamber



Applications: Test Chamber used to test anti-rain and water-proof performance for products, the products such as steam locomotive lamps, wiper performance, waterproof bands, motorcycle instruments, defense industry, navigation systems, missiles, radar cone top, aerospace industry etc.

High temperature and high pressure water spray test chamber (IPX9K) is suitable for testing whether electrical products, enclosures and seals can ensure good performance of equipment and components under high temperature and high pressure spray environment.

Standard :

ISO20653-2013、VW80000、GBT4208-2017: 14.2.9 and Figure 7, Figure 8, Figure 9, Figure 10, Figure 11, Figure 12 waterproof rating IPX9/9K requirements

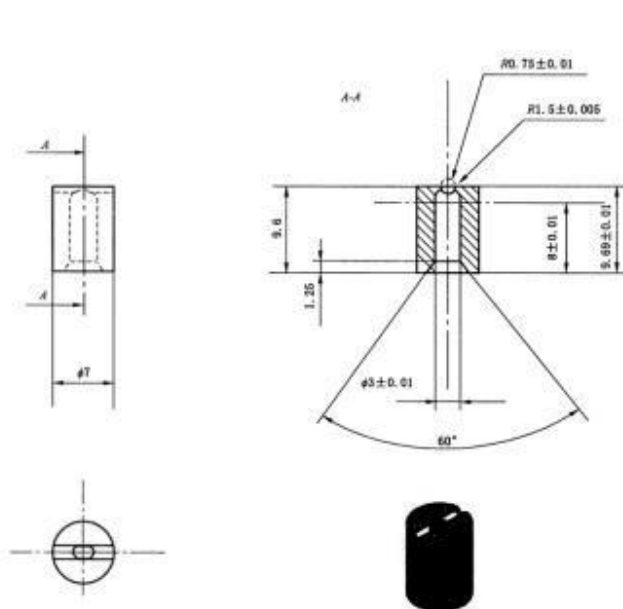
Features:

1. Suitable for product **IPX9 and 9K waterproof testing**
2. The inner box and turntable are all made of SUS304 stainless steel plate.

3. The housing is made from Chinese high-quality steel plate.
4. Special silicone seal ring, good elasticity, good durability.
5. Box structure, bring your own water tank, recycle water, tank equipped with level sensor, automatic control of water intake, and built in a low water level alarm detection.
6. Built-in temperature sensor to control the temperature of the water that has been set.
7. The observation window is made of tempered glass and built a LED lights for easy observation of internal testing.
8. 4 fan nozzles are distributed within a vertical 90° and are manufactured according to the IEC60529-2013/GB/T4208-2017 standard.



9. Turntable driver: Speed and angle can be set by touch screen (adjustable).



注: 9.69 ± 0.01 是以半径 0.75 ± 0.01 为起点测量的距离。

图 7 扇形喷嘴尺寸

10. Standard custom nozzles for full-size metering, and nozzle holders for adjusting the distance between the nozzle and the sample.
11. 7 inch touch screen and Panasonic PLC, electrical accessories such as LS, Omron and other imported brands.

Technical parameters :

The size outside the water tank	1450*1230* 1820 mm (include casters)
The size of the inner box	1000*1000*1000 mm
Number of Nozzle	4 pcs
Angle	0° 、 30° 、 60° 、 90°
Nozzle distance	100-200 mm (adjust manually)
Dia of Sample turntable	Dia 400 mm (Manual lift 400-650 mm distance between the turntable and the bottom)
Max Loads turntable loads	50 kg
Speed of turntable rotates	1~10 r/min
Spray water flow	14~16L/min
Water spray temperature	25℃, 80±5℃
Spray pressure	8000~10000 Kpa
Sprinkler impact	0.9~1.2N
Test time	120 S (30 S per position, can be set)
This tester chamber voltage	AC380V±10% ; 50Hz±10% , Three-phase five-line system
Sample voltage	220V. 50Hz
power	18.0 KW , Fire line+zero line+protective ground line(Resistance<4Ω)

Terms of use :

Environmental requirements	<ul style="list-style-type: none"> ● Ground is flat, drainage is smooth, the ground and walls are waterproof, setting ground leakage or drainage ditches. ● Well ventilated. ● No strong electromagnetic field around. ● No flammable, non-explosive, non-corrosive substances and dust around . ● Rack and control box Distance: 800-1000mm.
Temperature	5℃~35℃
Humidity	≤85%
Atmospheric pressure	86kPa~106kPa
Power supply conditions	<ul style="list-style-type: none"> ● Install the appropriate capacity of the leakage protection air switch for the device, the switch must be used independently of the device. ● Do not use the knife-switch or power outlet. ● Distance is no more than 2m from the air switch of creepage and equipment .
Water conditions	<ul style="list-style-type: none"> ● The water pressure is not less than 0.2Mpa and a 4-point tap is installed. ● The tap is no more than 2 meters away from the device.

Accessories:

5 meters water pipe*1 pcs